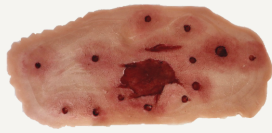
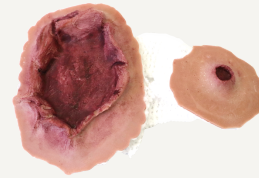


CONTENU

3 POLYCRIBLAGES



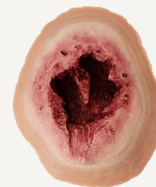
**3 PLAIES PAR BALLE
(ENTRÉE / SORTIE)**



**2 PLAIES PAR BALLE
(ENTRÉE)**



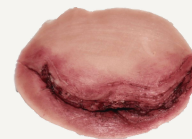
**2 PLAIES
PERFORANTES**



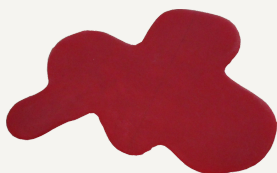
1 PLAIE À L'OEIL



1 SCLAP



**2 GRANDES
FLAQUES DE SANG**



**2 PETITES FLAQUES
DE SANG**



2 RIGOLES DE SANG



**2 X 250ML DE SANG
DE MISE EN SCÈNE**

